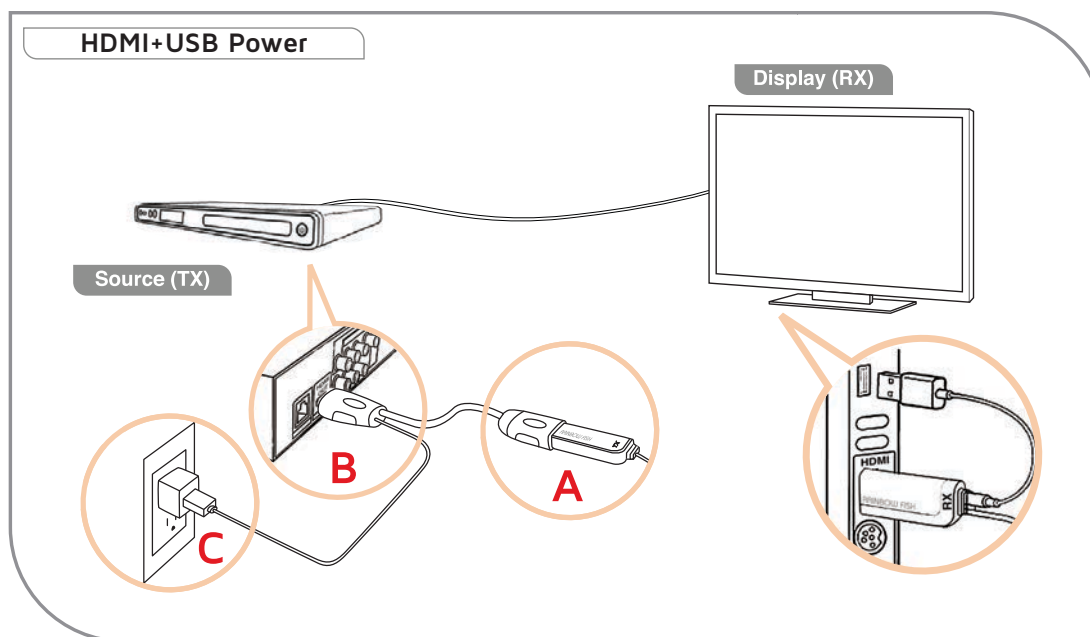




RAINBOW FISH

Rainbow Fish HDMI+USB Power Cable

The Rainbow Fish HDMI+USB Power Cable is an optional accessory that may be utilized in certain instances in which the HDMI output connector on a Blu-ray, DVD, AV Receiver, Game Console or other source component does not provide sufficient power to activate the Rainbow Fish HDMI source (TX) connector. In such instances, the Rainbow Fish Fiber Optic HDMI Cable will not power up and pass signal to the opposite end of the cable at the display (RX) location. In this case, the Rainbow Fish Fiber Optic HDMI Cable is plugged into the female HDMI connector on the HDMI+USB power cable (fig. A).



In order to connect to AC power, the user will need to supply a USB to AC adapter in order to connect the USB power cord attached to the male HDMI connector (fig. B) on the HDMI+USB power cable (fig. C). A device similar to commonly available smart phone and tablets are readily available at your local electronics store*.

Low power from an HDMI source is rare but Rainbow Fish has confirmed the following brands may exhibit this: Onkyo, Integra, Kaleidescape, Apple iPad (via Apple Digital AV Adapter).



The Rainbow Fish HDMI+USB Power Cable may be ordered from Rainbow Fish directly:

MSRP: \$20.00

Part: RAI-USB5V-WHT

UPC: 6952214580288

orders@rainbowfishcorp.com

Major credit cards accepted.

* Specifications for the USB to AC adapter required are:
120-240V-1.0A (1000mA) 50/60Hz; 5V